

(12) **United States Design Patent**
Brown

(10) **Patent No.:** **US D610,633 S**
(45) **Date of Patent:** **** Feb. 23, 2010**

(54) **BANANA-HEAD DOG STUFFED PLUSH TOY**

(76) Inventor: **Robert John Brown**, 711 Edmunds Ave., Union Beach, NJ (US) 07735

(**) Term: **14 Years**

(21) Appl. No.: **29/316,657**

(22) Filed: **Oct. 19, 2009**

Related U.S. Application Data

(62) Division of application No. 29/313,021, filed on Dec. 2, 2008, now Pat. No. Des. 607,065.

(51) **LOC (9) Cl.** **21-01**

(52) **U.S. Cl.** **D21/613; D21/612**

(58) **Field of Classification Search** D21/576,
D21/578, 584-585, 587-592, 595, 611-613,
D21/628; D11/158, 159; 446/72, 97, 268-269,
446/369, 376

See application file for complete search history.

(56) **References Cited**

U.S. PATENT DOCUMENTS

D276,637 S * 12/1984 Paczko D21/628
D408,671 S * 4/1999 Bear D21/611

D414,216 S * 9/1999 Crain et al. D21/628
D418,554 S * 1/2000 E. D21/613
D423,065 S * 4/2000 Wong D21/611
6,482,067 B1 * 11/2002 Pickens 446/268
D501,518 S * 2/2005 Meiry D21/611
D501,519 S * 2/2005 Meiry D21/611

* cited by examiner

Primary Examiner—Sandra Morris

(74) *Attorney, Agent, or Firm*—William M. Fischer

(57) **CLAIM**

The ornamental design for a banana-head dog stuffed plush toy, as shown and described.

DESCRIPTION

FIG. 1 is a left front perspective view of a banana-head dog stuffed plush toy in accordance with my new design;

FIG. 2 is a front view thereof;

FIG. 3 is a left side view thereof, the right side being substantially similar;

FIG. 4 is a rear view thereof;

FIG. 5 is a bottom view thereof; and,

FIG. 6 is a top view thereof.

1 Claim, 6 Drawing Sheets





FIG. 1





FIG. 3

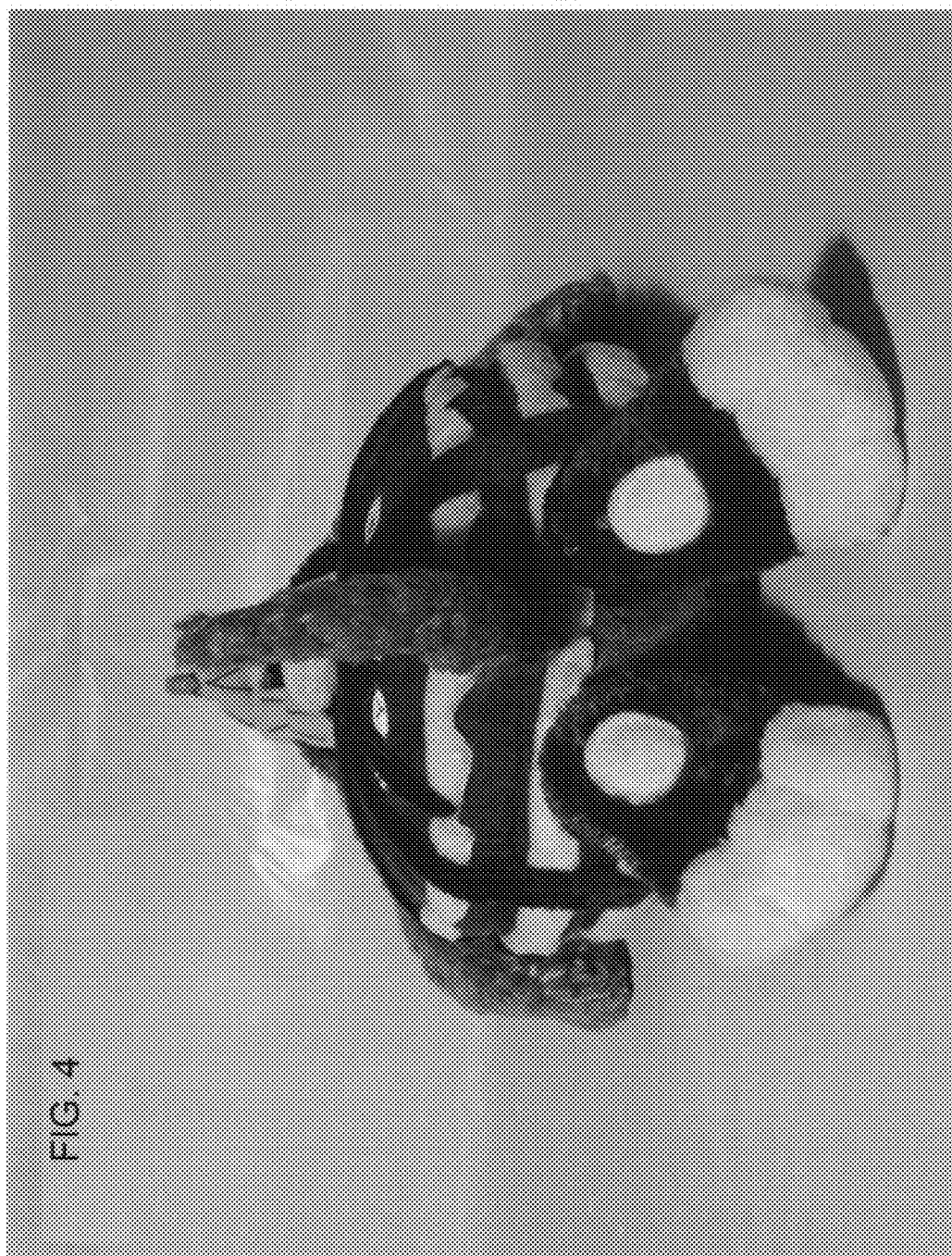


FIG. 4

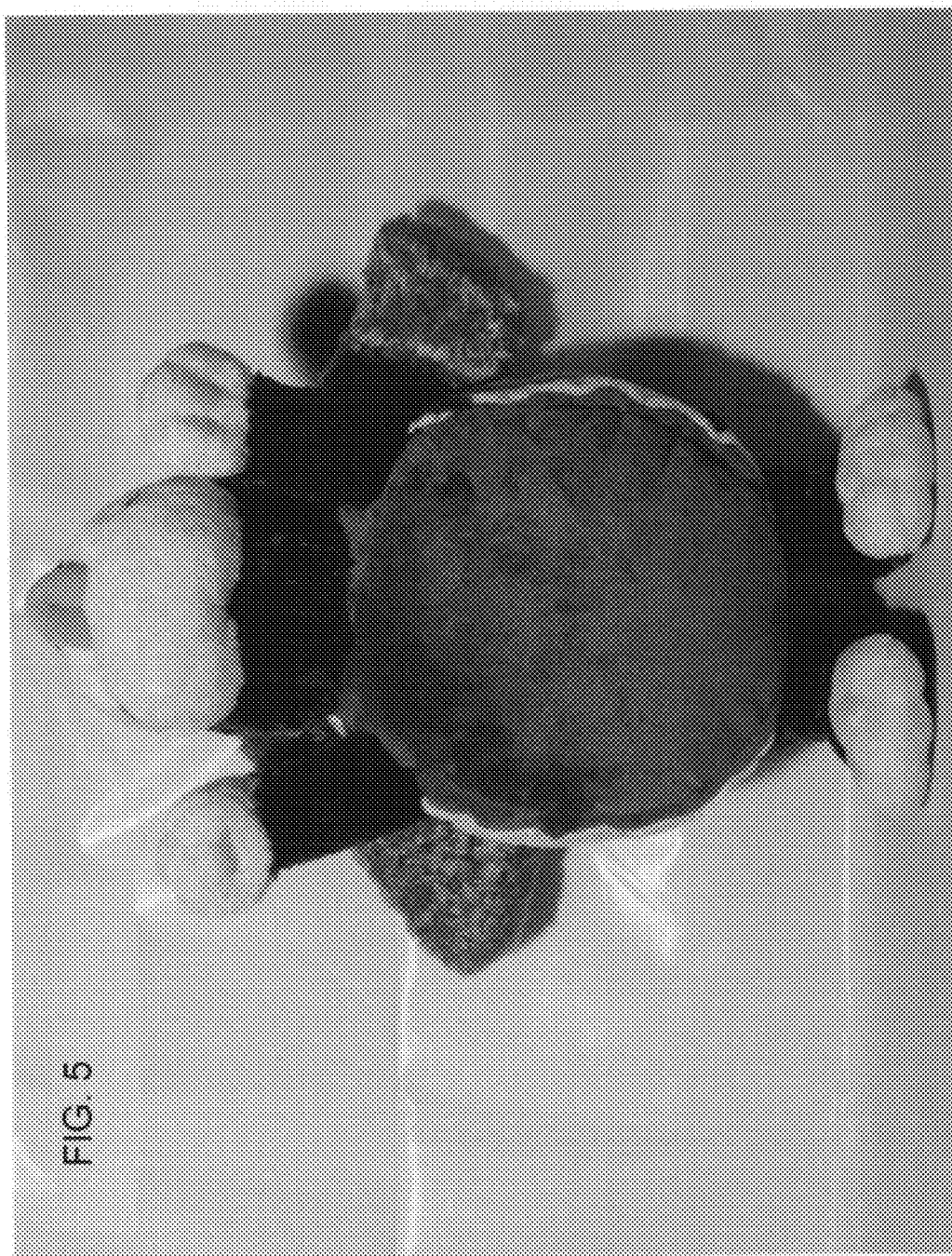


FIG. 5



FIG. 6